

CONSUMERTECH & NEXTGEN TRADE MISSION TO SAN FRANCISCO AND LOS ANGELES 2025

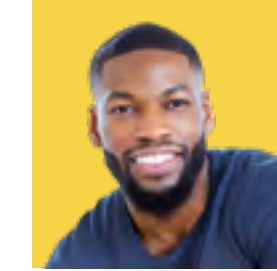
24-28 MAR 2025

ABOUT GROW LONDON GLOBAL

Grow London Global, powered by London & Partners, is a free 12-month programme for London-based tech companies that want to expand internationally - the successor to the Mayor's International Business Programme, which has helped 1,300 London scaleups including Monzo, Revolut, Checkout.com, Brompton Bicycles, Mr & Mrs Smith and Bloom & Wild reach their global expansion goals.

The programme offers expert advice, workshops, events, networking opportunities with partners, corporates, investors, peers as well as unrivalled opportunities to make valuable contacts into your target market on trade missions across the world.

For more information, visit: grow.london/global



Yomi Tejumola
Founder and CEO
[Yomi Tejumola](#)

Algomarketing enables enterprises to build the Evolved Workforce—a future-proofed, AI-empowered workforce, integrating AI to enhance productivity and creativity. We provide organisations with team augmentation, AI upskilling, tool adoption & enablement services, and custom AI solutions. Trusted by OpenAI, Google, and Cisco, we help organisations build their workforce of tomorrow, unlocking unparalleled efficiency and agility in an AI-driven world.



Johanna Clary
VP GTM & Growth
[johanna-clary](#)

Conode is transforming human-AI interaction with its fundamentally novel graph based data analytics platform aiming to gain deep insights out of volumes of structured and unstructured data sets and accelerate GenAI initiatives with Graph RAG. We are eager to explore opportunities, establish strategic partnerships, acquire new customers, and contribute to California's digital & GenAI transformation journey.



Jonathan Gilmore
CEO & Co-Founder
[jbgilmore](#)

DeepFlow solves human-agentic orchestration. 92% of Fortune 500 companies already use models and agents, but there is a less than 1% gain in holistic company productivity. DeepFlow solves this through intelligent task mapping, delegation and completion, alongside proprietary governance systems for agentic control. DeepFlow activates teams with AI to double the team's output.



Imad Riachi
Founder & CEO
[imadriachi](#)

Honu has reimaged the AI stack, and is pioneering a new layer that acts like a nervous system in a company: breaking the silos, connecting the dots and building a virtual representation of the company.

By 'docking' onto that layer AI agents break new grounds in business understanding, strategic reasoning and novel collaboration patterns.



Ben Camara
CEO / Founder
[ben-camara](#)

KLIQ is a business in a box for digital entrepreneurs looking to sell content, and scale a business. The first platform entrepreneurs open to start their day and see their earnings. Unlike other solutions KLIQ helps them turn one piece of content into multiple revenue streams, on multiple platforms, driving 5x more revenue than Patreon and up to 14x more than YouTube.



Dami Hastrup
CEO
[damihastrup](#)

MOONHUB is the VR training platform that bridges the gap between learning on the job and e-learning. Train like you're on the job, anywhere, any time.



Tino Millar
Founder and CEO
[tinomm](#)

Move AI makes character animation effortless and provides high precision motion capture with its spatial motion platform. It accelerates production timelines, cuts costs and unlocks new innovative experiences for entertainment, life sciences and engineering industries..



Nick Brackenbury
Co-Founder & CEO
[nickbrackenbury](#)

NearSt enables retailers to connect their in-store inventory data to the web. Today, over 95% of all in-store products can't be found online - a \$166B problem we're solving, bringing millions of online shoppers into physical stores.

CONSUMERTECH & NEXTGEN TRADE MISSION TO SAN FRANCISCO AND LOS ANGELES 2025

24-28 MAR 2025



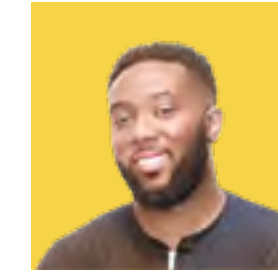
Odicci empowers brands with gamified marketing tools to boost customer engagement, collect valuable zero-party data, and drive loyalty. Our platform is fast to deploy, integrates seamlessly, and delivers personalized experiences that resonate with California's innovative, customer-centric retail and tech ecosystem.



Jacques Prothon
CEO & Founder
[in](#) [jacquesprothon](#)



Qonstrue provides Digital AI Workers for Compliance: Grow your workforce for important work without growing headcount. Used by quality, health and safety, and procurement teams across industrial sectors to build capacity for important work.



Tai Alegbe
CEO
[in](#) [tai-alegbe](#)



Quin transforms online businesses, including retail, banking, and B2B SaaS, with real-time behavior prediction. Our AI platform analyzes in-session data in under 70 milliseconds, enabling precise predictions to drive conversions, enhance user experiences, and boost profitability. Trusted by global brands like M&S and IKEA, we deliver measurable ROI in just 15 days. Our AI platform delivers actionable insights, making us a valuable partner in California's innovative tech ecosystem.



Gonca Gulser
Co-Founder
[in](#) [gonca-gulser](#)



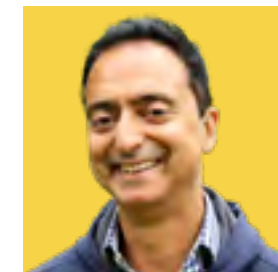
Robin AI is the market leader in legal AI for business, transforming legal workflows for organisations like Pfizer, General Electric, KPMG and PWC. Our AI platform streamlines contract review, search, and reporting, enabling businesses to focus on strategic goals. With a rapidly growing presence in the US and partnerships with Anthropic and AWS, we are expanding quickly across the West Coast.



Maryam Salehijam
Senior Account Executive
[in](#) [maryamsalehijam](#)



Sevva AI is a Generative AI Agent Platform that helps companies and financial institutions to build their AI Workforce. Our AI Agents automate diverse white-collar roles, handling cognitive tasks traditionally performed by human employees in office settings. Companies hire our digital workers to handle repetitive cognitive tasks, analyse data, provide insights, and create reports.



Silash Ruparell
Co-Founder
[in](#) [silashruparell](#)



VE3 stands at the forefront of digital innovation, with expertise in AI, cloud and data solutions. Our products include PromptX, an advanced AI navigation tool designed to streamline data retrieval and enhance collaboration within businesses and MatchX, for precise data quality and matching helping you transform how you manage, match and utilize your data.



Manish Garg
Managing Director
[in](#) [mgdotonl](#)



VividQ is a deep tech company revolutionizing display technology with its advanced software for holographic 3D experiences. It enables realistic, immersive visuals for AR/VR, automotive displays, and consumer electronics, redefining how people interact with digital content. Their cutting-edge innovations shape the future of visual computing and immersive technologies.



Samantha Creswick
Chief of Staff
[in](#) [samantha-creswick](#)



WeArisma is a Global Social and Influencer Intelligence platform empowering the likes of LVMH brands, Comcast, Drunk Elephant and Booking.com to turn influential voices into revenue. We combine AI, influencer marketing and social listening to deliver smarter, scalable strategies with real impact.



Jenny Tsai
Founder and CEO
[in](#) [jennyhtsai1](#)

The Grow London Global Consumer Tech & NextGen team



Anna Carson-Parker
Senior Trade Manager – Enterprise
[in](#) [envelope](#)



Vanessa Romer
Senior Trade Manager – Creative Technology
[in](#) [envelope](#)



Penny Harwood
SVP Northwest – North America
[in](#) [envelope](#)



James Cummings
Vice President Southwest – North America
[in](#) [envelope](#)



Matthew Kolkin
Business Development Executive – North America
[in](#) [envelope](#)



Persephone Godwin
SVP Northwest – North America
[in](#) [envelope](#)



Kyle Dewees
Business Development Manager – North America
[in](#) [envelope](#)



Borja Palmer
Business Development Executive – North America
[in](#) [envelope](#)



[X @growlndbusiness](#)

[grow.london](#)

[in](#) [Grow London](#)

[@GrowLondonBusiness](#)